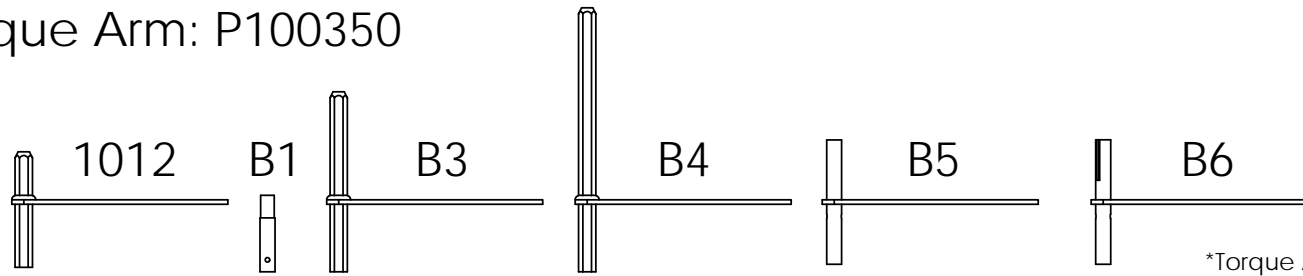


Rivet Used for Torque Arm: P100350

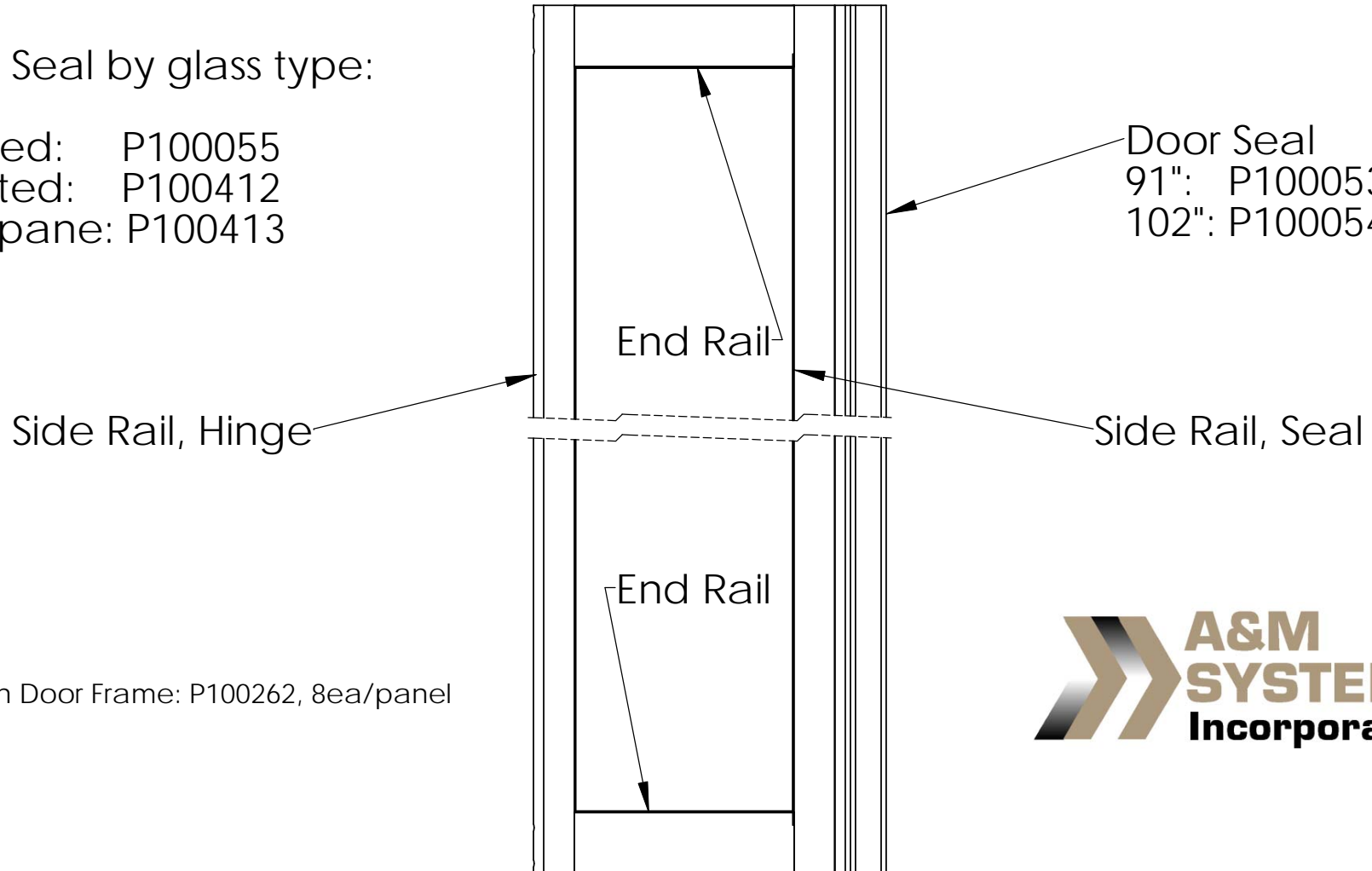


\*Torque Arm Details on next pages

Glazing Seal by glass type:

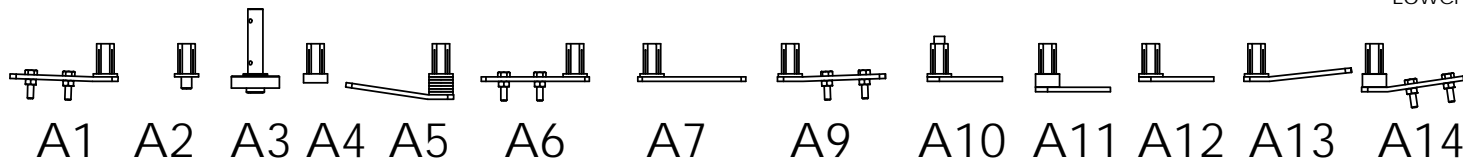
Tempered: P100055  
 Laminated: P100412  
 Thermopane: P100413

Door Seal  
 91": P100053  
 102": P100054



Screw Used on Door Frame: P100262, 8ea/panel

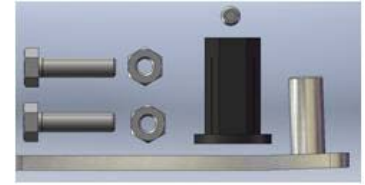
\*Lower Pivot Details on next pages



# A&M Systems Door A Option Detail

## K9032 (A1)

Qty	U/M	Part No	Description	Notes
1	ea	P100062	Set Screw, 1/4-20 x 3/16"	
2	ea	P100030	Nylock Nut, 1/4-20	
2	ea	P100031	Bolt, 1/4-20 x 1"	
1	ea	1541.1	Lower Pivot, 2° SS	
1	ea	1544	Hex Bushing	



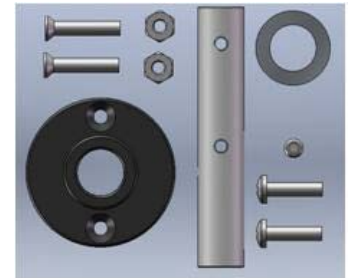
## K9033 (A2)

Qty	U/M	Part No	Description	Notes
1	ea	P100062	Set Screw, 1/4-20 x 3/16"	
1	ea	1547	Pin, 7/16" x 1-3/4"	
1	ea	1544	Hex Bushing	



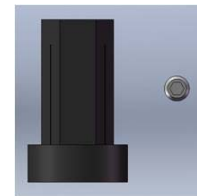
## K9034 (A3)

Qty	U/M	Part No	Description	Notes
1	ea	P100062	Set Screw, 1/4-20 x 3/16"	
2	ea	P100029	Nylock Nut, 10-32	
2	ea	P100358	Screw, 10-32 x 1"	
1	ea	P100034	Washer, 1" x 5/8"	
1	ea	1536	Lower Pin	
2	ea	P100028	Screw, 10-32 x 1/2"	
1	ea	1534	Lower Pivot	



## K9035 (A4)

Qty	U/M	Part No	Description	Notes
1	ea	P100062	Set Screw, 1/4-20 x 3/16"	
1	ea	1561	Hex Bushing, 3/8" shoulder	



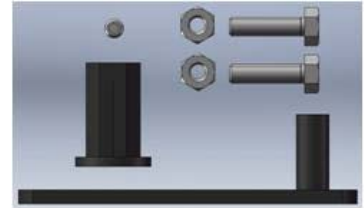
### K9040 (A5)

Qty	U/M	Part No	Description	Notes
1	ea	P100062	Set Screw, 1/4-20 x 3/16"	
1	ea	1701, Rev. C	Lower Pivot, 8.5°, SS	
1	ea	1702, Rev A	Spacer	
1	ea	1544	Hex Bushing	



### K9041 (A6)

Qty	U/M	Part No	Description	Notes
1	ea	P100062	Set Screw, 1/4-20 x 3/16"	
2	ea	P100030	Nylock Nut, 1/4-20	
2	ea	P100031	Bolt, 1/4-20 x 1"	
1	ea	1707	Lower Pivot	
1	ea	1544	Hex Bushing	



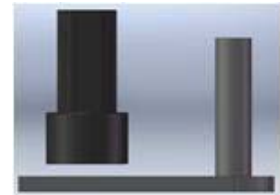
### K9042 (A7)

Qty	U/M	Part No	Description	Notes
1	ea	P100062	Set Screw, 1/4-20 x 3/16"	
1	ea	1707	Lower Pivot	
1	ea	1544	Hex Bushing	



### K9043 (A8)

Qty	U/M	Part No	Description	Notes
1	ea	1745	Lower Pivot	
1	ea	1754	Hex Bushing, 5/8" shoulder	



### K9044 (A9)

Qty	U/M	Part No	Description	Notes
1	ea	P100062	Set Screw, 1/4-20 x 3/16"	Same as K9032 only lower pivot is E-coated Carbon Steel
2	ea	P100030	Nylock Nut, 1/4-20	
2	ea	P100031	Bolt, 1/4-20 x 1"	
1	ea	1764	Lower Pivot, 2°, CS	
1	ea	1544	Hex Bushing	



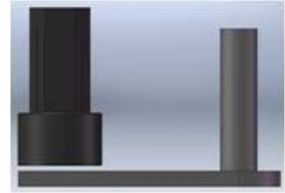
### K9045 (A10)

Qty	U/M	Part No	Description	Notes
1	ea	P100062	Set Screw, 1/4-20 x 3/16"	1780 hex busing has through hole
1	ea	1745	Lower Pivot	
1	ea	1780	Hex Bushing, through hole	



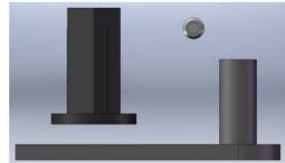
### K9046 (A11)

Qty	U/M	Part No	Description	Notes
1	ea	1745	Lower Pivot	
1	ea	1786	Hex Bushing, 9/16" shoulder	



### K9047 (A12)

Qty	U/M	Part No	Description	Notes
1	ea	P100062	Set Screw, 1/4-20 x 3/16"	
1	ea	1793	Lower Pivot	
1	ea	1544	Hex Bushing	



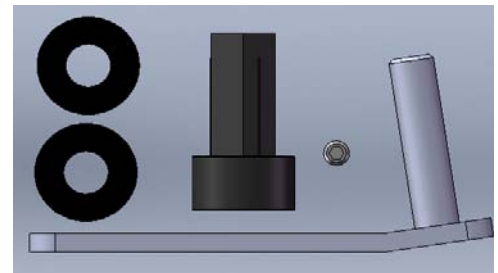
### K9048 (A13)

Qty	U/M	Part No	Description	Notes
1	ea	P100062	Set Screw, 1/4-20 x 3/16"	
1	ea	1795	Lower Pivot, 6° bend	
1	ea	1544	Hex Bushing	
2	ea	P100030	Nylock Nut, 1/4-20	
2	ea	P100031	Bolt, 1/4-20 x 1"	



### K9056 (A14)

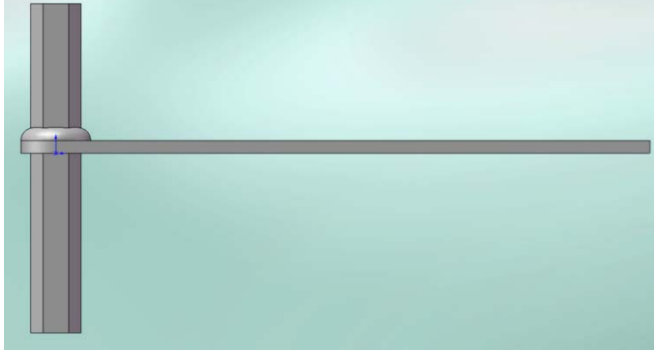
Qty	U/M	Part No	Description	Notes
1	ea	P100062	Set Screw, 1/4-20 x 3/16"	
1	ea	1701, Rev. C	Lower Pivot, 8.5°	
1	ea	1786	Hex Bushing, 9/16" Shoulder	
2	ea	1863	1 x 7/16 x 1/8 ABS Washer	



# A&M Systems Doors B Option Detail

## Standard

Qty	U/M	Part No	Description
1	ea	AR1012	9" Torque Arm, 5" Hex



## 1619.1 Pin (B1)

Qty	U/M	Part No	Description
1	ea	1619.1	5/8" round to 9/16" round, 10-32 hole



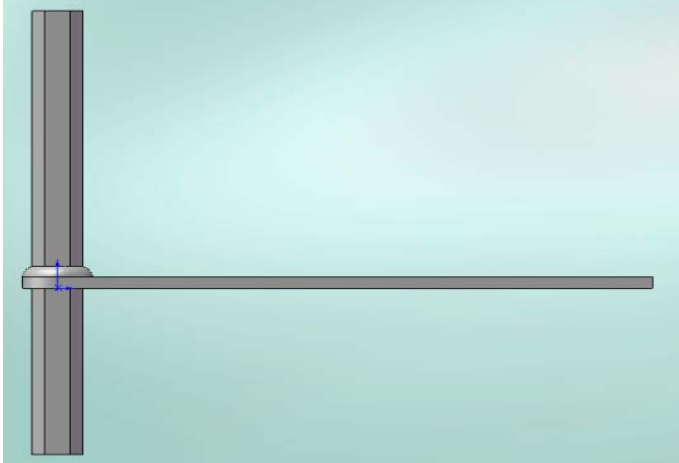
## Nothing (B2)

Qty	U/M	Part No	Description
--		-	-

# A&M Systems Doors B Option Detail

## 1759 Torque Arm (B3)

Qty	U/M	Part No	Description
1	ea	1759	9" Torque Arm, 7.5" Hex



## 1789 Torque Arm (B4)

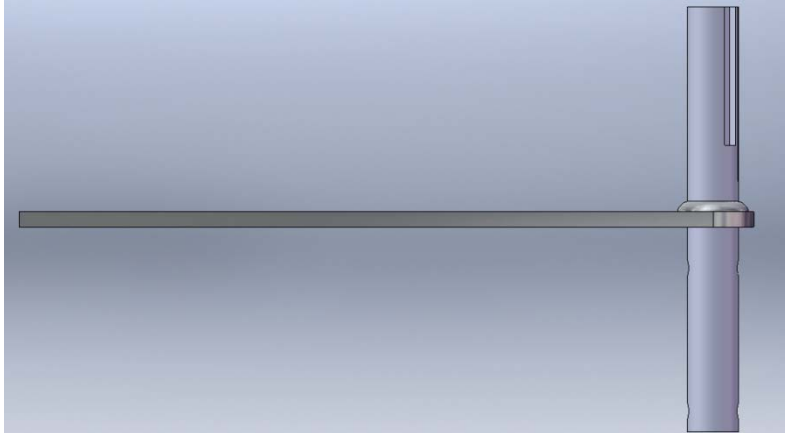
Qty	U/M	Part No	Description
1	ea	1789	9" Torque Arm 11" Hex



# A&M Systems Doors B Option Detail

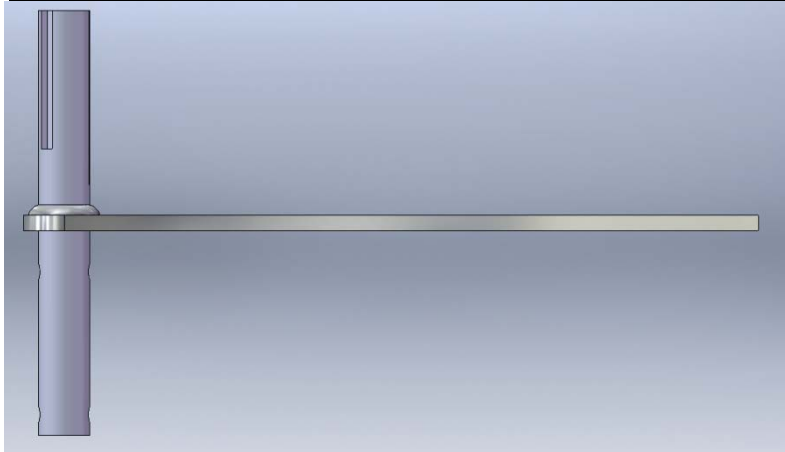
## 1831 Torque Arm AFT (B5)

Qty	U/M	Part No	Description
1 ea		1831	5/8" dia shaft with 45° offset 3/16"key

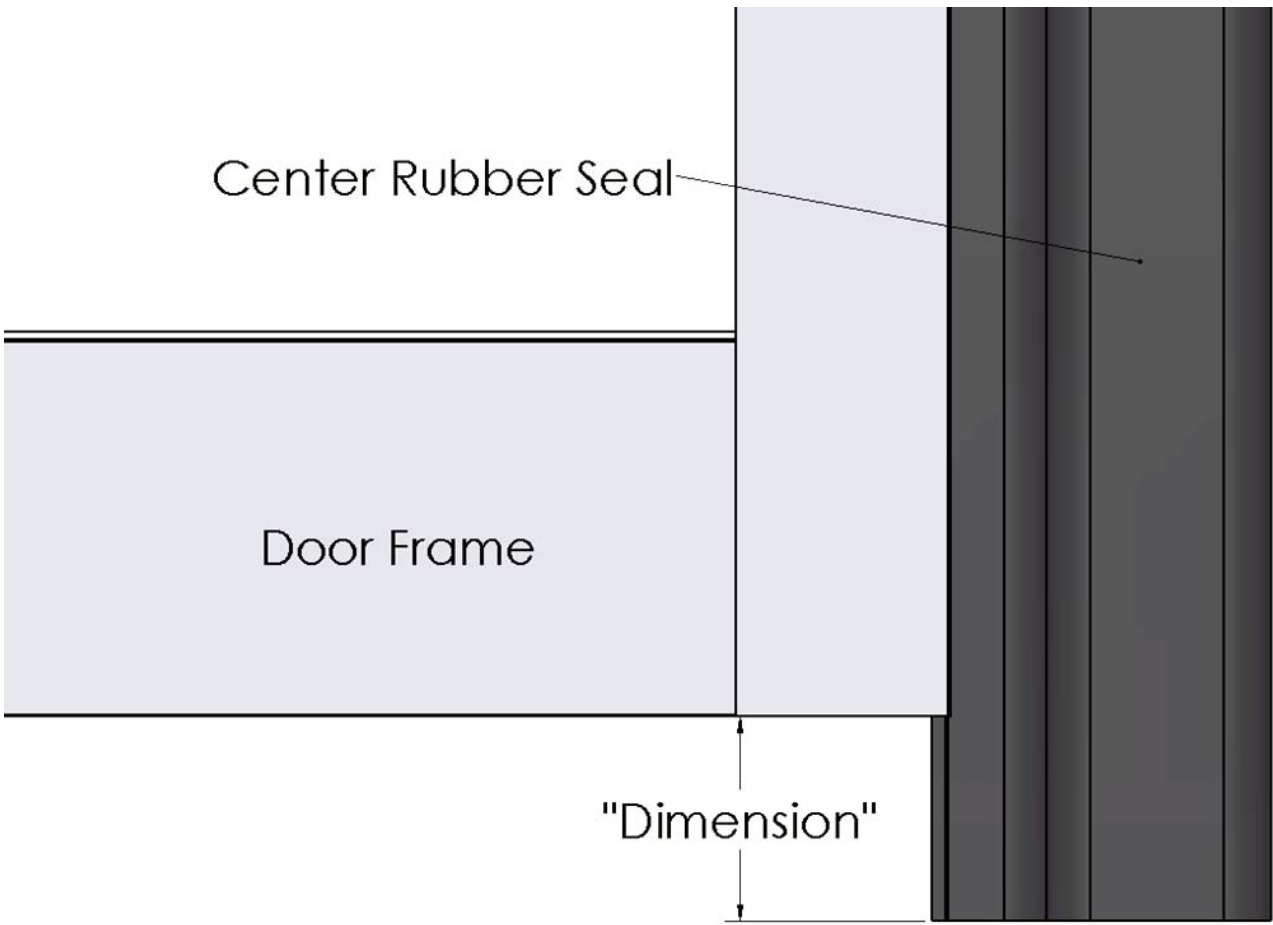


## 1832 Torque Arm FWD (B6)

Qty	U/M	Part No	Description
1 ea		1832	5/8" dia shaft with 45° offset 3/16"key



# A&M Systems Door G Option Detail



"G" Option Code*	Dimension
G4	1/4"
G5	5/16"
G6	3/8"
G7	7/16"
G8	1/2"

\*All G-codes are in 1/16". For example G5 is 5/16", G20 is 20/16" or 1-1/4", G24 is 24/16" or 1-1/2". Not all available G-codes are listed.

